

NEWS & VIEWS

Open Access

Mapping super-resolution image quality

Megan A. Steves¹ and Ke Xu¹✉

Abstract

The local quality of super-resolution microscopy images can be assessed and mapped by rolling Fourier ring correlation, even when image quality varies within a single image.

Super-resolution fluorescence microscopy—recognized by the 2014 Nobel Prize—has allowed researchers to visualize biological structures and beyond in exquisite detail. As super-resolution microscopy has become more widely adopted, variations in both experimental techniques and analysis algorithms have proliferated. Consequently, microscopists seeking the best possible resolution for a particular sample could benefit from choosing the most suitable experimental parameters and analysis. Large benchmarking studies offer quantitative measures of image reconstruction quality that can help guide these decisions¹. However, these benchmarks also demonstrate that no single method performs best in all situations, requiring quantitative assessments of image quality on each dataset. Also, unlike benchmarking studies, methods for determining the quality of experimental images must function using only the data themselves, since ground truth images are not available.

One way to assess the experimental super-resolution image quality is to compare two images of the same sample acquired and analyzed under identical conditions. Differences between the two images likely arise due to errors from experimental noise and other factors, indicating areas where the super-resolution image is less reliable. Simply subtracting the two images is not ideal—intensity fluctuations likely dominate the different images, and small variations in the sample structure may be overshadowed. Fourier ring correlation (FRC), previously introduced for fluorescence microscopy by Nieuwenhuizen et al.², compares images in the frequency domain

instead. The Fourier-transformed spatial data from the image pairs are compared through a correlation function. The correlation will be high at frequencies (inverse length) containing meaningful information; at frequencies with unreliable information, the correlation will decay to zero. The frequency at which the correlation drops below a threshold yields the effective resolution of the image. While FRC is commonly used to assess image quality, it gives limited information about how resolution varies across an image, which can be caused by factors such as inhomogeneous labeling density and illumination, optical aberrations including defocusing, and detector defects.

In this issue of LSA, Zhao et al. introduce an approach to address this issue and map out local image quality at high spatial resolution³. Their rolling Fourier ring correlation (rFRC) method uses a scanning window to calculate the local FRC (Fig. 1a) and hence maps out the image quality pixel-by-pixel across the image (Fig. 1b). To account for systematic errors, the authors further incorporate an additional module to generate a resolution-scaled error map (RSM)⁴, which identifies artifacts of the reconstruction algorithm by comparing with a diffraction-limited reference image. The authors demonstrate the utility of the combined methodology on both simulated and experimental data. As the method is model-independent, the authors successfully assess super-resolution images acquired with a range of modalities, including 2D and 3D SMLM, SRRF, SIM, and others.

One enabling application of rFRC is the generation of super-resolution images using multiple reconstruction algorithms to achieve the highest resolution across the entire image, depicted in Fig. 2. The various algorithms available for SMLM reconstruction are often best suited for different

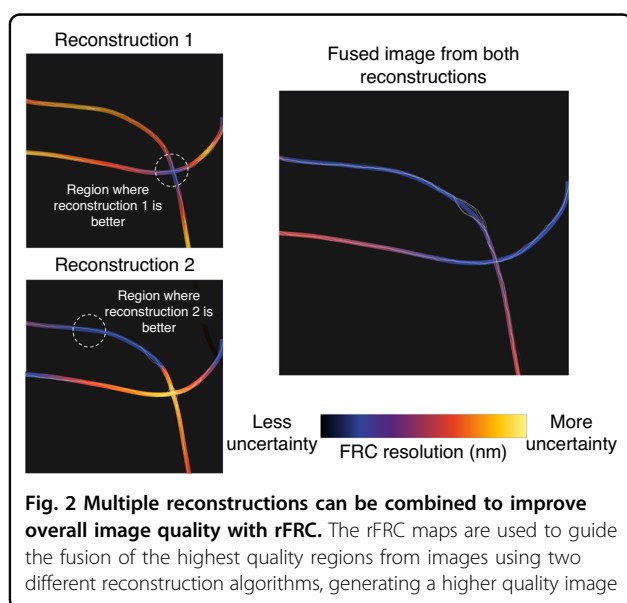
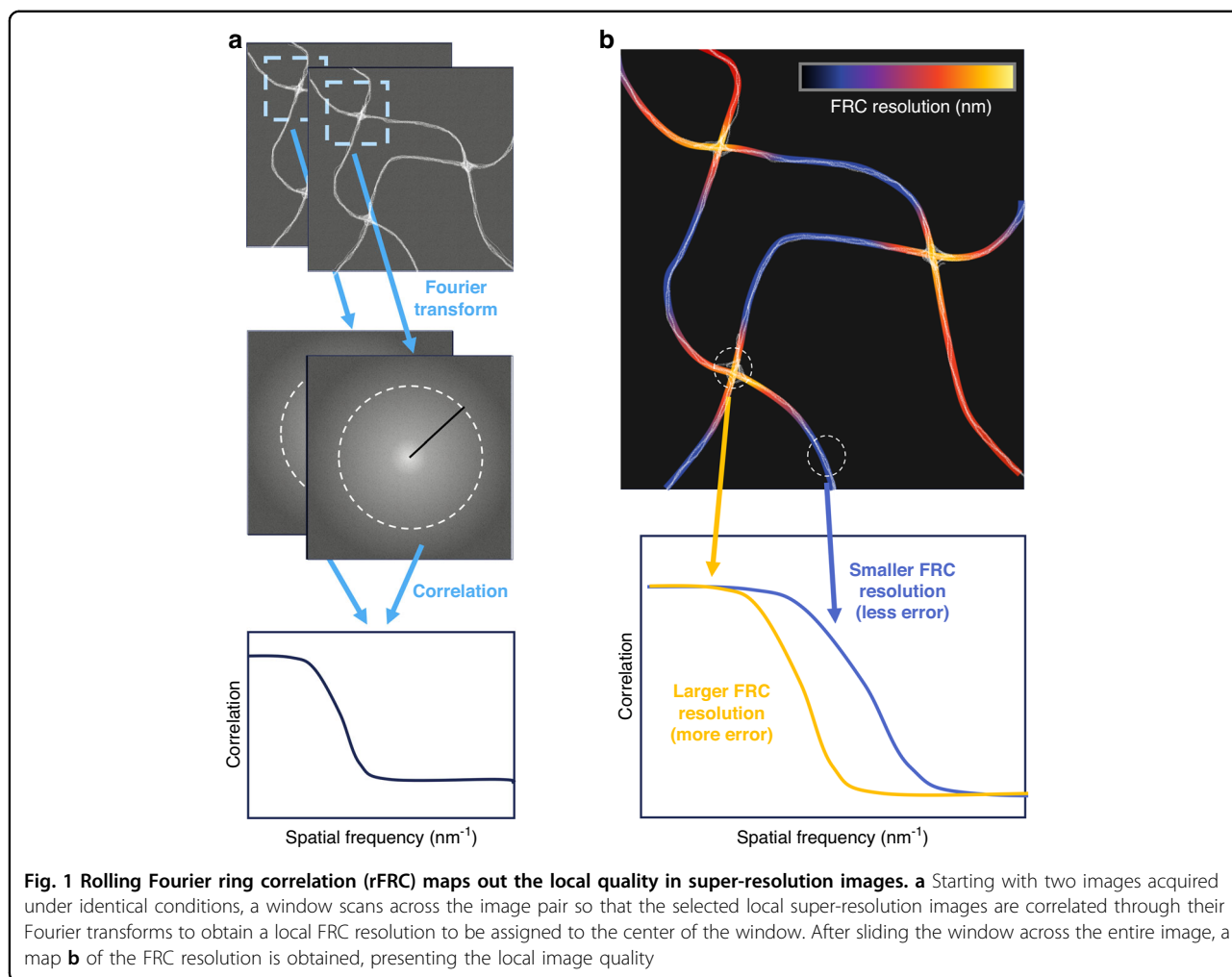
Correspondence: Ke Xu (xuk@berkeley.edu)

¹Department of Chemistry, University of California, Berkeley, CA 94720, USA

© The Author(s) 2024



Open Access This article is licensed under a Creative Commons Attribution 4.0 International License, which permits use, sharing, adaptation, distribution and reproduction in any medium or format, as long as you give appropriate credit to the original author(s) and the source, provide a link to the Creative Commons license, and indicate if changes were made. The images or other third party material in this article are included in the article's Creative Commons license, unless indicated otherwise in a credit line to the material. If material is not included in the article's Creative Commons license and your intended use is not permitted by statutory regulation or exceeds the permitted use, you will need to obtain permission directly from the copyright holder. To view a copy of this license, visit <http://creativecommons.org/licenses/by/4.0/>.



conditions, such as low or high emitter density. Since emitter density is often heterogeneous across the sample, researchers may need to compromise on an algorithm that is suitable for all the local densities found in their sample. rFRC provides a path to locally determine the best reconstruction method and generate a fused image composed of the best parts of each reconstructed image.

The results reported by Zhao et al. reflect a contribution towards reproducible and quantitative super-resolution microscopy. With implementations for ImageJ, MATLAB, and Python, rFRC joins other open-source toolboxes such as NanoJ-SQUIRREL⁴, HAWKMAN⁵, and SIMCheck⁶ for assessing super-resolution image quality, alongside the numerous available algorithms for reconstructing super-resolution images from raw data. Ultimately, the resulting quality of super-resolution images is a product of both experimental parameters and the image processing steps used to create them. Quantitative analysis of image quality can generate more confidence in the results of super-

resolution studies, avoid overinterpretation of images, and suggest new paths towards even higher resolution.

From a different perspective, by mapping out local image quality at the super-resolution level, rFRC also echoes recent efforts to extend super-resolution microscopy to new dimensions⁷. The possibility to encode new functional information⁸ into such high-dimensional super-resolution maps, or, in the opposite direction, the generalization of rFRC to map out the local quality of or variations in other multidimensional super-resolution data, afford attractive prospects.

Conflict of interest

The authors declare no competing interests.

Published online: 01 February 2024

References

1. Sage, D. et al. Super-resolution fight club: assessment of 2D and 3D single-molecule localization microscopy software. *Nat. Methods* **16**, 387–395 (2019).
2. Nieuwenhuizen, R. P. J. et al. Measuring image resolution in optical nanoscopy. *Nat. Methods* **10**, 557–562 (2013).
3. Zhao, W. S. et al. Quantitatively mapping local quality of super-resolution microscopy by rolling Fourier ring correlation. *Light Sci. Appl.* **12**, 298 (2023).
4. Culley, S. et al. Quantitative mapping and minimization of super-resolution optical imaging artifacts. *Nat. Methods* **15**, 263–266 (2018).
5. Marsh, R. J. et al. Sub-diffraction error mapping for localisation microscopy images. *Nat. Commun.* **12**, 5611 (2021).
6. Ball, G. et al. SIMcheck: a toolbox for successful super-resolution structured illumination microscopy. *Sci. Rep.* **5**, 15915 (2015).
7. Xiang, L. M., Chen, K. & Xu, K. Single molecules are your quanta: a bottom-up approach toward multidimensional super-resolution microscopy. *ACS Nano* **15**, 12483–12496 (2021).
8. Yan, R., Wang, B. W. & Xu, K. *Functional* super-resolution microscopy of the cell. *Curr. Opin. Chem. Biol.* **51**, 92–97 (2019).